



OCTOBER 4TH-5TH

**2024
INFORMATION
TOOL KIT**



OCTOBER

4TH-5TH

COUNTRY CALLING

20

OCEAN CITY, MD

24

FRIDAY

ERIC CHURCH ★ JELLY ROLL

RILEY GREEN ★ WARREN ZEIDERS ★ CLINT BLACK ★ MARTINA MCBRIDE

THE RED CLAY STRAYS ★ NEEDTOBREATHE
KYLIE MORGAN ★ ELLA LANGLEY ★ ALEXANDRA KAY
HUESTON ★ JIMMY CHARLES ★ WILL JONES

SATURDAY

TYLER CHILDERS ★ LAINIEY WILSON

BAILEY ZIMMERMAN ★ BROTHERS OSBORNE ★ DWIGHT YOAKAM

TANYA TUCKER ★ PARMALEE ★ PAUL CAUTHEN
ALANA SPRINGSTEEN ★ NIKKI LANE ★ DASHA
DRAYTON FARLEY ★ AIDAN CANFIELD ★ WAYLON WYATT

TICKETS AVAILABLE AT

COUNTRYCALLINGFESTIVAL.COM

OCEAN CITY
Maryland



WELCOME

We're thrilled to announce first-ever Country Calling Festival! Get ready for two days of non-stop fun on Friday, October 4 and Saturday, October 5, 2024. Country music takes over Ocean City Inlet with toe-tappin' tunes and a good time! Over 25 artists will perform sets on 3 different stages: 2 on the beach and one along the boardwalk. This festival will be an absolute blast. The festival will take place at the southern end of the boardwalk and beach, so mark your calendars and join us for an unforgettable event.

Our Ocean City Communication Team is here to ensure your full preparation for the festival. Whether attending the event, working nearby, or living downtown, we've got you covered.

We'll do our best to keep you informed if there are any updates or changes before or during the festival. And if you have any questions we haven't addressed, please don't hesitate to contact us. We're here to help!

The official website for this event is <https://www.countrycallingfestival.com>.

OCEAN CITY COMMUNICATION TEAM:

Ashley Miller

Deputy Communications Manager
Ocean City Police
amiller@oceancitymd.gov
443-235-4420

Jessica Waters

Marketing & Communications Director
Tourism
jwaters@oceancitymd.gov
443-235-2650

Lauren Davis

Government Relations Manager
Mayor's Office
ldavis@oceancitymd.gov
443-365-4042

Ryan Whittington

Community & Department Engagement Ofc.
Ocean City Fire
rwhittington@oceancitymd.gov
443-235-3205

Together, we can make the Country Calling Festival somewhere to smile about.



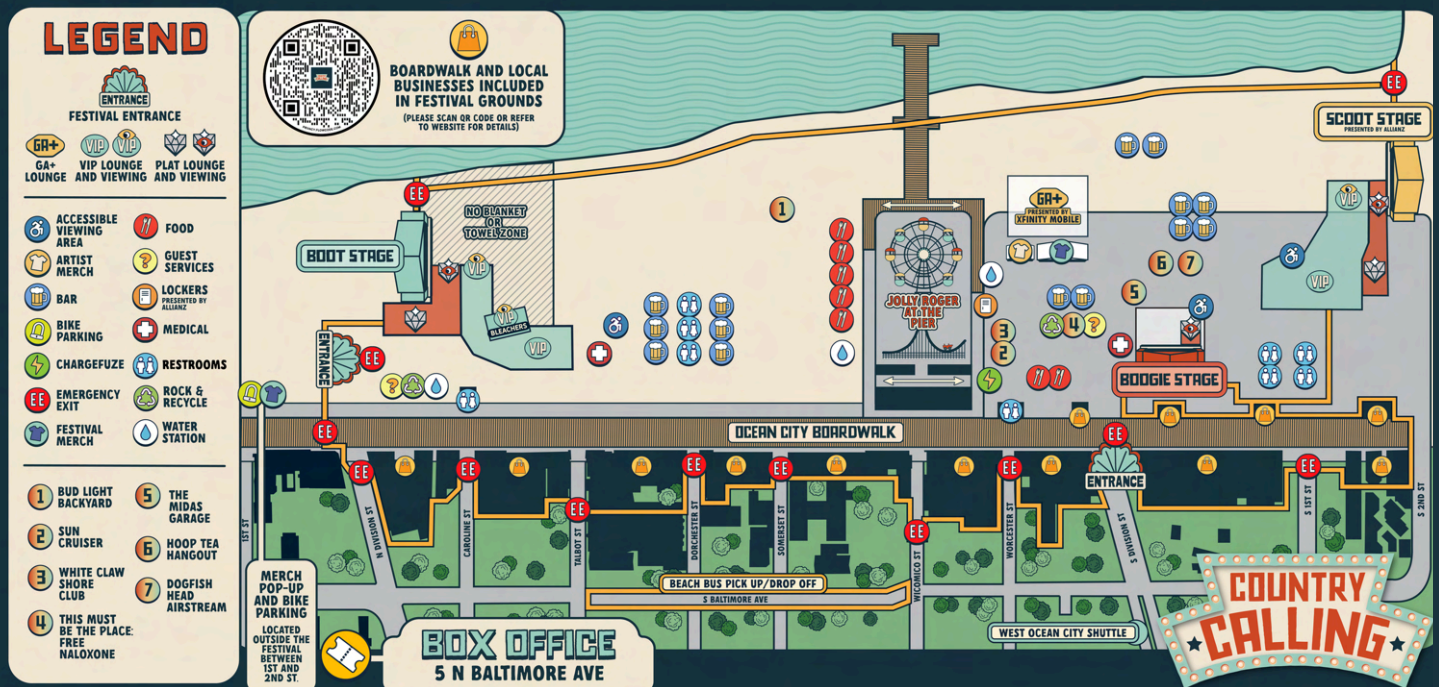
TABLE OF CONTENTS

- 5** *WHERE IS THE FESTIVAL?*
- 6** *HOW DO I GET TO & FROM*
- 7** *PARKING INFORMATION*
- 8** *PUBLIC TRANSIT INFORMATION*
- 9** *PUBLIC TRANSIT MAP*
- 10** *RIDESHARE/TAXI INFORMATION*
- 11** *TRAFFIC PATTERN EXPECTATIONS*
- 12** *EVENT TIMELINE*
- 13** *OUR TOP FAQ*
- 14** *BUSINESSES FAQ*
- 15** *PUBLIC SAFETY FAQ*
- 16** *TRANSPORTATION FAQ*
- 18** *BOARDWALK FAQ*
- 19** *FESTIVAL GOERS FAQ*
- 20** *RESOURCES*
- 21** *SOCIAL MEDIA*



WHERE IS THE FESTIVAL?

The Country Calling Festival will be held on the beach near the Ocean City Inlet, located at 809 South Atlantic Ave, Ocean City, MD 21842. The festival grounds will include the south end of the Boardwalk (Atlantic Ave) and Boardwalk businesses. Therefore, they will not be open to the general public during the festival weekend.



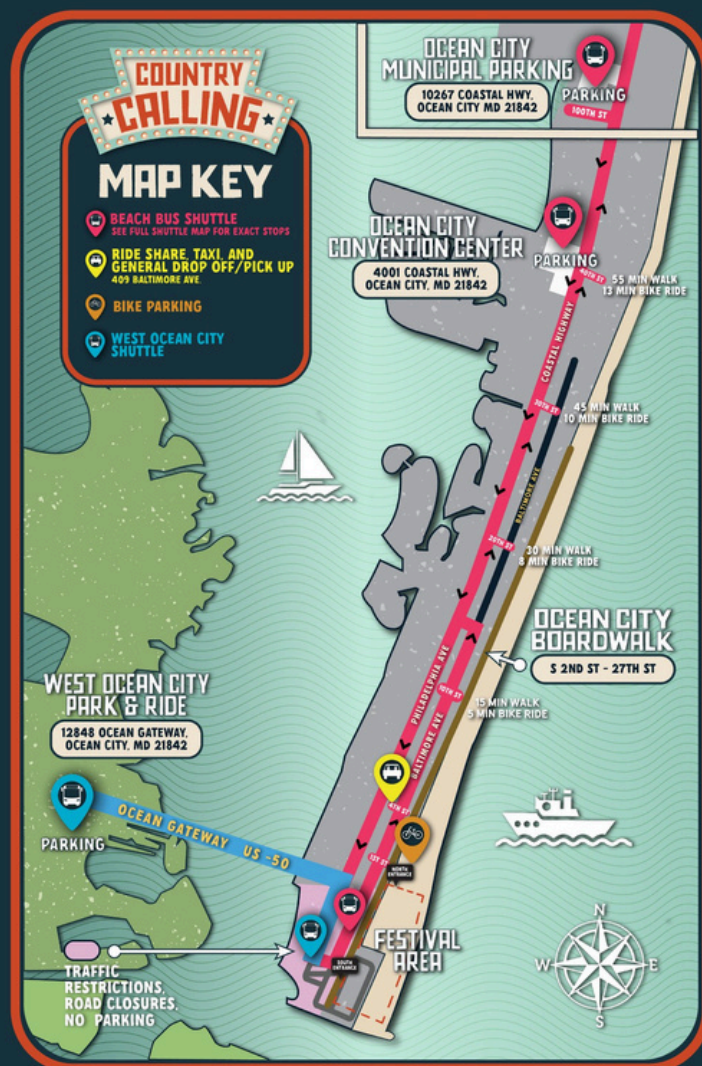
*Map subject to change.

Visit www.countrycallingfestival.com for the full list of the Boardwalk Businesses that will be part of the Oceans Calling Festival.



HOW DO I GET TO & FROM?

- When planning to travel to and from the festival, concertgoers should expect traffic delays, heavy pedestrian and bicycle traffic, and limited parking.
- If you are driving from outside of Ocean City, parking options are available at the West Ocean City Park and Ride and at both the Ocean City Convention Center Parking Lot and the 100th Street Municipal Parking Lot.
- Public Transportation is available on both Ocean City's **Beach Bus**, which travels north and southbound along Coastal Highway, and the **West Ocean City Shuttle**, which travels to and from the West Ocean City Park and Ride. All Ocean City municipal buses are ADA-accessible.
- For the festival, the Beach Bus is running an express route with a reduced set of stops. Please see route map for available locations.
- When leaving the festival in the evening, concertgoers can walk to Baltimore Avenue to catch the Beach Bus (for northbound access). Northbound buses will be staged on Baltimore Avenue between Worcester Street and Talbot Street.
- **Walking or biking to the festival is strongly encouraged.** The walk from the North End of the Boardwalk (27th Street) to the North Entrance is approximately a 2-mile walk, taking around 40 minutes. Please remember to walk smart, use crosswalks, and wait for the pedestrian signal. Bike Parking will be available on the beach between 1st and 2nd St. Please remember to bring your own bike locks to secure your bicycle(s)!
- A designated drop-off and pick-up location will be established in the Boardwalk block (10-block) of N. Division Street for any disabled individual, and adequate accommodations will be provided.
- *Please note:* Street parking in the Boardwalk block (10-block) of every street south of N. Division Street will be unavailable during the festival weekend. Road closures and an alternative traffic pattern will be in place at 8 p.m. each day of the festival.



PARKING INFORMATION

WHERE SHOULD I PARK?

Parking during the Country Calling Festival will be extremely limited downtown. Suppose you are driving from outside Ocean City. In that case, parking options are available at the West Ocean City Park and Ride, the Oceans City Convention Center, and the 100th Street Municipal Parking Lot. Public transportation will be available to and from these locations during the festival. Each of these lots offers ADA parking.

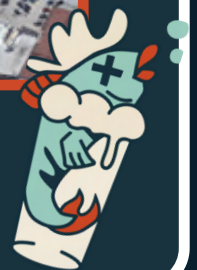
ARE THERE ANY PARKING RESTRICTIONS DURING THE EVENT?

Starting Friday, October 4, 2024, “NO PARKING” will be allowed along the 10 blocks (also known as the ocean block) of every street south of N. Division Street. The Department of Public Works will place barricade signage on each of these streets on these streets on Tuesday, October 1, 2024, to notify the public of the upcoming closure.

Vehicles parked on the streets in the 10 blocks of those streets will be towed to the Ocean City Police Department, which is located at 6501 Coastal Highway, Ocean City, MD 21842.

Private lots and private driveways in this area will still be accessible to employees and residents.

Starting Tuesday, September 17, 2024, until approximately Thursday, October 10, 2024, the municipal parking lot at N. Division Street will be closed to the public. This street will be utilized as one of the main loading points for all of the festival material and then will transition into the drop-off and pick-up location for disabled individuals.



PUBLIC TRANSIT INFORMATION

WILL PUBLIC TRANSPORTATION BE AVAILABLE DURING OCEANS CALLING?

The Ocean City Beach Bus and the West Ocean City Shuttle will be running during the Country Calling Festival weekend. All Ocean City Municipal buses are ADA accessible.

WILL THE BEACH BUS BE RUNNING ITS REGULAR SCHEDULE?

The Ocean City Beach Bus will be operating in a **REDUCED STOP, EXPRESS SERVICE** mode along Coastal Highway. The reduced-stop, express service has about 20 stops each way in hopes that it helps buses flow back and forth a little quickly. Certain stops will be inactive during the two-day festival. The affected stops will be covered, we ask that you please proceed north or south along Coastal Highway to the nearest active bus stop



A map of the Reduced Stop, Express Service Mode can be printed from the resource section

HOW MUCH DOES IT COST TO RIDE OCEAN CITY'S BEACH BUS?

If you plan to take the Beach Bus during the weekend, remember to have exact cash or your pre-paid photo ID General Bus Pass which can be obtained from City Hall.

STANDARD FARE:

\$4 Ride-All-Day

HALF FARE:

(\$2.00 Ride-All-Day): Senior Citizens age 65 and over, Disabled Persons, Medicare card holders, and Ocean City Non-Resident Senior Bus Pass holders.

FREE:

Children 42 inches in height and under, ADA Certified Disabled card holders, and Ocean City Resident Senior Bus Pass holders. Proof of eligibility may be required.

In addition, buses from an outside provider will be running the service from the West Ocean City Park and Ride. Tickets for the Park and Ride service may be purchased from OC Transportation Staff at the ticket booth at the OC Bus Terminal buildings. Tickets are required to be presented upon boarding.

WHEN WILL THE OCEAN CITY'S BEACH BUS BE RUNNING?

The Beach Bus will be operating its normal hours each day which is from 6 a.m. until 2 a.m.

IS THERE A BUS FROM WEST OCEAN CITY TO THE FESTIVAL/DOWNTOWN AREA?

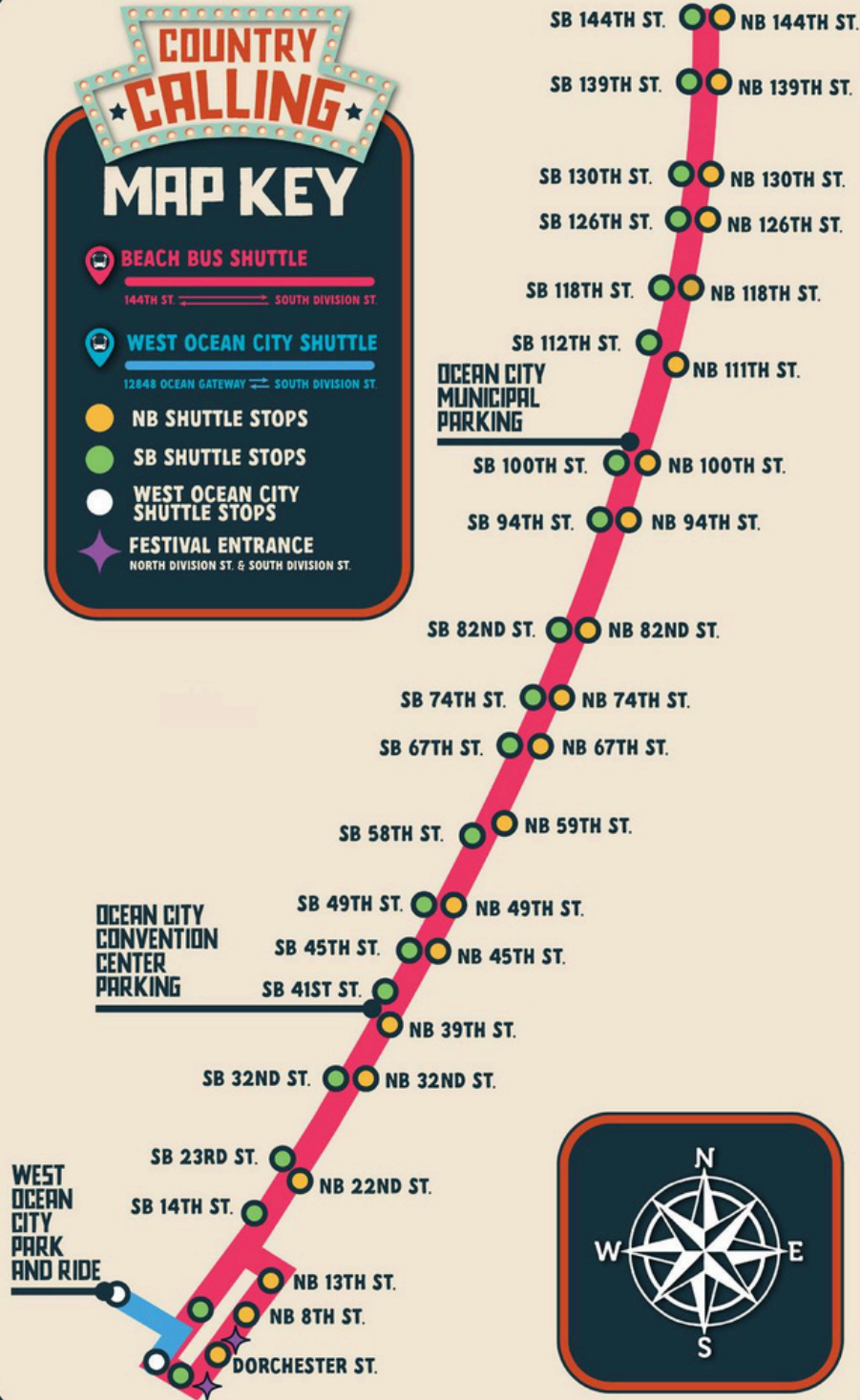
Buses from an outside provider will be running the shuttle service from the West Ocean City Park and Ride. Tickets for the Park & Ride service may be purchased from OC Transportation Staff at the ticket booth at the OC Bus Terminal. Tickets will be required to be presented upon boarding even though it is an outside provider.



PUBLIC TRANSIT MAP

COUNTRY CALLING MAP KEY

-  **BEACH BUS SHUTTLE**
144TH ST. ↔ SOUTH DIVISION ST.
-  **WEST OCEAN CITY SHUTTLE**
12848 OCEAN GATEWAY ↔ SOUTH DIVISION ST.
-  **NB SHUTTLE STOPS**
-  **SB SHUTTLE STOPS**
-  **WEST OCEAN CITY SHUTTLE STOPS**
-  **FESTIVAL ENTRANCE**
NORTH DIVISION ST. & SOUTH DIVISION ST.



RIDE SHARE / TAXI INFO

CAN I TAKE A TAXI OR RIDE SHARE TO THE COUNTRY CALLING FESTIVAL?

The official passenger drop-off and pick-up location for Country Calling is located at the 4th Street Municipal Parking Lot, which is located at 409 Baltimore Avenue.

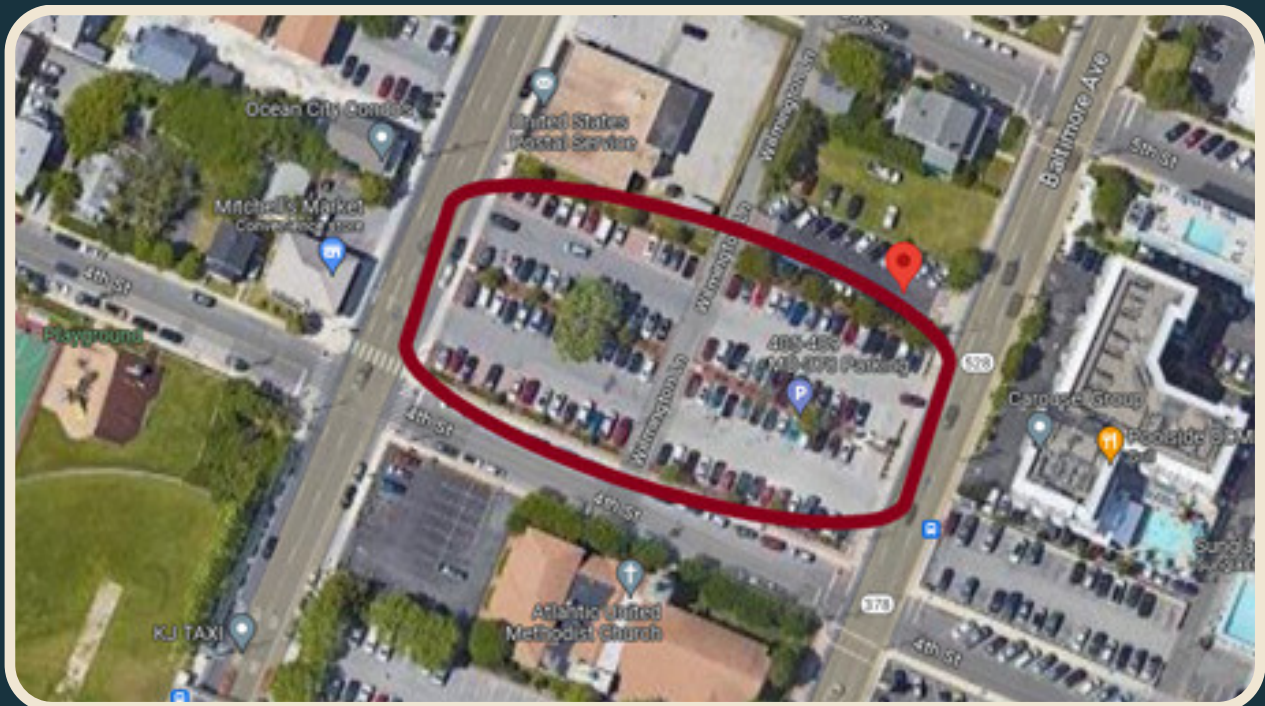
HOW FAR IS THE 4TH STREET LOT FROM THE FESTIVAL GROUNDS?

The walk from the Ride Share lot to the festival grounds is approximately 10 minutes. Use the crosswalk to cross east to the boardwalk and turn right to head south to the venue.

CAN THE TAXI OR RIDE SHARE PICK ME UP DOWNTOWN?

After 8 p.m. each of the festival days, the area south of N. Division Street will be closed to vehicular traffic. Ride shares, taxis, and friends won't be able to pick you up near the festival site after 8 pm. It will be best to walk north to 4th St along the Boardwalk and use the crosswalk to cross west to Baltimore Ave. to the Ride Share lot.

To keep the flow of traffic, we suggest everyone use the rideshare lot for downtown pick-ups after 8 p.m.



REMINDER! Please keep in mind that Ride Share demand will be very high after the festival concludes each night with a limited number of drivers. Consider leaving early or taking a stroll along the boardwalk until the rush is over.



TRAFFIC PATTERN EXPECTATIONS

ALL TRAFFIC PATTERNS AND CLOSURES ARE SCHEDULED TO OCCUR AT 8 P.M. EACH OF THE FESTIVAL DAYS

I HEARD THERE WOULD BE ROAD CLOSURES, WHAT SHOULD I EXPECT?

Starting at approximately 8 p.m., traffic will be prohibited from traveling south of N. Division Street.

The south turn lane off the US Rt. 50 onto Philadelphia Ave will be restricted to emergency, mass transit vehicles, and residents only.

Vehicles will be diverted onto N. Division Street and then north on Baltimore Avenue.

A traffic pattern will be established to direct all southbound traffic on St. Louis Avenue to 2nd Street towards Philadelphia Ave.

- Southbound traffic on St. Louis Ave will be restricted to emergency vehicles, residents, and employees of downtown businesses.

A traffic pattern will be established at South 1st Street and Baltimore Ave to prohibit any traffic from entering the Inlet Lot.

Northbound traffic on Baltimore Avenue from S. Division Street to Talbot Street will be reduced to one lane of travel for vehicle traffic.



LANE 1 (LEFT LANE)

is designated for vehicle traffic.

LANE 2 (MIDDLE LANE)

will be utilized for mass transit OC Beach Bus

LANE 3 (RIGHT LANE)

is designed as a safety lane

ALWAYS WALK SMART. Cross at and within marked crosswalks, follow all traffic signals, and use the sidewalks. **ALWAYS BIKE SMART.** Use designated bike lanes, follow all traffic signals, and ride with traffic. **ALWAYS DRIVE SMART.** Slow down, stay alert, and drive sober.

EVENT TIMELINE



September 10, 2024

The Inlet Parking Lot will be closed to the public beginning Tuesday, September 10 through Sunday, October 19.

****There are some evening hours during the October Cruisin' event****

September 17, 2024

The municipal parking at N. Division Street will be closed to the public. This will serve as an active "construction" crossing point until Saturday, October 7th. The Beach at N. Division Street/Caroline Street and east of the Inlet Parking Lot will be closed to the public.

September 19, 2024

All of the beach areas south of N. Division Street will be closed to the public.

Please Note: Fencing will go up with a gate during the time leading up to the event. The gates will remain open until Thursday's closure.

October 3, 2024

The Boardwalk from N. Division Street South is anticipated to close to the public around 10:30 p.m.

October 4-5, 2024

The festival hours are from 12 p.m. - 11 p.m. daily.

October 6, 2024

The Boardwalk will be reopened to the public by 6 a.m.

THE BEACH REOPENING

The Beach will open in stages as areas are cleaned and deemed safe for public use on or before October 10, 2024.

COUNTRY CALLING BOX OFFICE HOURS

The Country Calling Box Office will be located at 5 Baltimore Avenue, Ocean City, MD 21842.

Friday, October 4, 2024: 10 a.m. to 10 p.m.

Saturday, October 5, 2024: 11 a.m. to 10 p.m.



YOU'VE ASKED & WE'VE LISTENED!

OUR TOP FAQ'S

CAN I ACCESS THE BOARDWALK IF I AM NOT ATTENDING THE FESTIVAL?

The Boardwalk (Atlantic Ave) from 27th Street to North Division Street will be open to the public. The south end of the Boardwalk, as well as the Boardwalk businesses in that area, will be included in the festival grounds. Therefore, the Boardwalk south of North Division Street will not be open to the general public during the festival weekend.

WILL THERE BE TRAFFIC?

We anticipate a steady flow of vehicle and pedestrian traffic throughout the day. The majority of the traffic congestion is anticipated after the festival. We will have an alternate traffic pattern established to allow for additional pedestrian walkways, and the ability to stage multiple Beach Buses along Baltimore Ave for those wishing to take the bus back. To avoid the congestion, take a stroll along the Ocean City Boardwalk or visit a downtown business outside of the festival footprint.

WHERE CAN I PARK?

Parking in the downtown area will be extremely limited during the festival weekend. Public transportation, walking/biking and ride sharing is encouraged. See [page 7](#) for additional information regarding parking.

WILL THERE BE HANDICAPPED PARKING?

The 10 block (also known as the ocean block) of North Division Street has been designated as a drop-off and pick-up for any disabled individual(s). All open and/or available municipal parking lots have ADA parking spaces. In addition, our Beach Buses are ADA compliant.

IF I LIVE AND/OR WORK DOWNTOWN, HOW DO I GET TO MY JOB OR RESIDENCE AFTER THE TRAFFIC PATTERN STARTS?

If you work or reside within the festival grounds area and need to get downtown after 8:00 p.m., please head to St. Louis Ave at 2nd Street. Ocean City Police personnel will be at this intersection directing traffic. Mass transit, emergency vehicles, downtown residents, and business patrons will be allowed to travel south of this location. Everyone else traveling southbound will be rerouted toward Philadelphia Ave from St. Louis Ave and 2nd Street.



BUSINESSES FAQ

CAN I STILL RECEIVE DELIVERIES DURING THE FESTIVAL?

Yes, you can still receive deliveries. We suggest that you contact your scheduled delivery companies to let them know that additional time will be needed to get into the festival area.

HOW DO MY EMPLOYEES GET TO WORK IF OUR BUSINESS IS ON THE FESTIVAL GROUNDS?

If your business is within the festival grounds, please remind employees to factor in additional time to get to work. Employees will not be able to access your business through backdoors. To ensure the safety of employees, and participants, everyone will need to pass through a secure checkpoint. Employee Entrances will be staggered throughout the festival grounds. Employee entrances are located at North Division Street, Caroline Street, Dorchester Street, Somerset Street, Worcester Street, South Division Street and South 1st Street. Credentialed employees should use the closest entrance to your business to minimize having to fight through the festival crowd.

WHERE DO MY EMPLOYEES PARK?

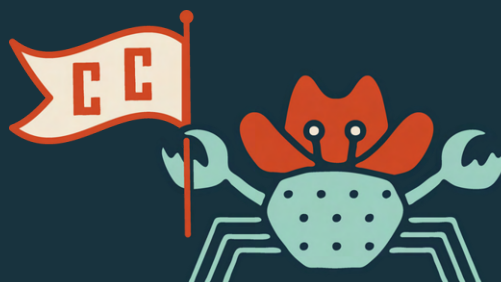
Employees will be able to utilize your designated/private parking lots. If employees typically park within the ocean block (10 block), they will need to find the next available parking area. Street parking within the ocean block (10 block) from N. Division South will be prohibited.

HOW WILL PATRONS AND EMPLOYEES GET TO MY ESTABLISHMENT IF WE ARE NOT INCLUDED IN THE FESTIVAL GROUNDS?

Boardwalk businesses operating outside of the festival footprint may operate business as usual. Parking downtown will be limited throughout the weekend, so employees should plan accordingly.

WILL THE TRAFFIC PATTERNS AFFECT GETTING TO MY PLACE OF EMPLOYMENT?

The traffic pattern will go into effect at 8 p.m. and remain in effect until the conclusion of the festival. We do anticipate a steady flow of vehicle and pedestrian traffic throughout the day. We suggest leaving early, having a parking plan, and staying alert for vehicles, pedestrians, and bicyclists traveling the roadways in the Town of Ocean City.



PUBLIC SAFETY FAQ

IS IT SAFE TO VISIT OCEAN CITY WITH SUCH A LARGE EVENT HAPPENING?

Ocean City is a great destination for families, and it's safe to visit Ocean City and the Boardwalk. The Town of Ocean City has been diligently planning for the Country Calling Festival to ensure the event is safe and enjoyable for the participants, businesses, and residents. Residents and Visitors can expect the same level of enforcement and presence of law enforcement personnel they are accustomed to.

WILL THERE BE ENOUGH POLICE OFFICERS TO HANDLE THE EVENT?

The Oceans City Police Department is fully committed to ensuring the safety and security of the Country Calling Festival. We are prepared to assist with the festival, and several seasonal personnel are still employed with our agency. A security company will be stationed within the venue, allowing our officers to remain available for calls for service. We will also have a full complement of law enforcement personnel in the downtown area to assist with traffic congestion and pedestrian crossings.

WILL THERE BE ISSUES WITH TRAFFIC BACK-UPS?

Traffic congestion should be minimal throughout the day. The festival takes place from 12 p.m. to 11 p.m. each day. We anticipate that festival goers will filter in throughout the day. The majority of the traffic congestion is anticipated after the festival. We will have an alternate traffic pattern established to allow for additional pedestrian walkways, and the ability to stage multiple Beach Buses along Baltimore Ave for those wishing to take the bus back.

To avoid the congestion, take a stroll along the Ocean City Boardwalk or visit a downtown business outside of the festival footprint.

ARE THEIR SAFETY MEASURES IN PLACE AT THE FESTIVAL?

Safety is our first priority. The Town of Ocean City has worked closely with event organizers to ensure the safest possible experience for residents and visitors. For the safety of everyone entering the festival, all fans are subject to a full and complete airport-style search prior to entry. While inside the festival, remember: You're the eyes and ears of the festival. If you see something suspicious, say something.

Here are **four easy ways** to look out for yourself and those around you:

1. **Watch out for your neighbors** – if someone around you looks like they need help, check in with them. If someone is getting unruly, alert the nearest staff member. Keep an eye on your belongings.
2. **Be considerate** – this is a shared space and we want everyone to enjoy themselves. Keep the vibes chill and your hands to yourself.
3. **Use the buddy system** – the Main Guest Services Tent is the designated meeting point for lost or separated people. If one of your friends is in trouble, please alert festival staff – they will assist you, no questions asked.
4. **Keep yourself and your belongings safe** – be aware of your surroundings and keep an eye on your personal items at all times.



TRANSPORTATION FAQ

IS THE BEACH BUS GOING TO BE RUNNING ITS NORMAL SCHEDULE?

The Ocean City Beach Bus will be operating in a **REDUCED STOP, EXPRESS SERVICE** mode along Coastal Highway. The reduced-stop, express service has about 20 stops each way in hopes that it helps buses flow back and forth a little more quickly.

Certain stops will be inactive during the two-day festival. The affected stops will be covered. We ask that you proceed north or south along Coastal Highway to the nearest active stop.

A map of the Reduced Stop, Express Service Mode can be printed from the resource section

DOES THE BEACH BUS COST ANYTHING TO RIDE IT?

If you plan to take the Beach Bus during the weekend, remember to have **exact cash** or your pre-paid photo ID General Bus Pass which can be obtained from City Hall.

- **Standard Fare:** \$4 Ride-All-Day
- **Half Fare** (\$2.00 Ride-All-Day): Senior Citizens age 65 and over, Disabled Persons, Medicare card holders, and Ocean City Non-Resident Senior Bus Pass holders.
- **Free:** Children 42 inches in height and under, ADA Certified Disabled card holders, and Ocean City Resident Senior Bus Pass holders. Proof of eligibility may be required.

In addition, buses from an outside provider will be running the service from the West Ocean City Park and Ride. Tickets for the Park and Ride service may be purchased from OC Transportation Staff at the ticket booth at the OC Bus Terminal buildings. Tickets are required to be presented upon boarding.

WHERE DO I CATCH THE WEST OCEAN CITY PARK AND RIDE BUS AFTER THE FESTIVAL?

The West Ocean City Park and Ride shuttle will pick up their riders at the South Terminal Bus Station located on S. Division Street.

WHO DO I CONTACT IF I LEAVE SOMETHING ON THE BEACH BUS?

If you *JUST* left an item on the bus, you can contact the Transportation Dispatch office at 410-723-1606 to see if the driver can locate and secure the item.

Items not claimed immediately will be turned over to the Ocean City Police Department at the end of the bus driver's shift. The Ocean City Police Department can be reached at 410-723-6610.



TRANSPORTATION FAQ

HOW DO I KNOW WHICH BUS STOP TO GET ON AND OFF AT?

Certain stops will be inactive during the two-day festival. The affected stops will be covered. We ask that you proceed north or south to the nearest active bus stop. All buses will drop off at the zone on S. Baltimore Ave. between Wicomico St. and Talbot St. When leaving the festival, all buses will pick up in the same location. Check out the bus stop map [here](#).

DOES THE BEACH BUS TAKE CREDIT CARDS AND/OR APPLE PAY?

No, the Beach Bus requires EXACT Cash or a prepaid bus pass that can be obtained at City Hall.

WHERE CAN MY RIDESHARE DROP ME OFF?

The official passenger drop-off and pick-up location for Country Calling is located at the 4th Street Municipal Parking Lot which is located at 409 Baltimore Avenue.

WILL THE TRAMS BE RUNNING THIS WEEKEND?

The trams will not be running during the Country Calling Festival. The Boardwalk is anticipated to be congested throughout the weekend with pedestrians and bicycles. N. Division Street will be designated a drop-off and pick-up for anyone disabled individuals who can not traverse the Boardwalk.

MY HOTEL OFFERS A SHUTTLE TO THE FESTIVAL. WHERE DOES THE HOTEL SHUTTLES DROP-OFF/PICK-UP?

Some hotels may be running a courtesy shuttle from your hotel to the festival area. Be sure to check with your hotel for service hours. If provided, hotels will drop/pick up their guests at Somerset Street, approximately two blocks from the venue. Please note these shuttles are different from the Beach Bus.

IS THERE A DESIGNATED ADA DROP OFF & PICK UP LOCATION?

ADA drop off and pick up is available at 1N. Division St (east of S. Baltimore Ave.). All Ocean City buses are ADA accessible and ADA parking is available in all municipal parking lots (including West Ocean City Park & Ride and the Convention Center).

ARE THERE ANY OTHER WAYS TO GET TO THE FESTIVAL?

For transportation over the water, consider taking one of the four OC Bay Hopper vessels which will be in operation during the festival. Information about the Water Shuttle schedule for the festival weekend can be found via their website at <https://ocbayhopper.com/oceanscalling/>



BOARDWALK FAQ

WILL THE BOARDWALK BE OPEN TO NON-FESTIVAL GOERS BEFORE THE CONCERTS BEGIN?

The Boardwalk (Atlantic Ave) from 27th Street to North Division Street will be open to the public during the festival weekend. The Boardwalk south of North Division Street, as well as the Boardwalk businesses in that area, will be included in the festival. Therefore, the Boardwalk south of North Division Street will only be open to festival goers during the festival weekend. This area will remain open to festival goers during festival hours only. Festival gates open at 12 p.m. until 11 p.m. Friday, October 4th through Saturday, October 5th.

ARE BOARDWALK BUSINESS CASHLESS LIKE THE OCEANS CALLING FESTIVAL?

Each Boardwalk business operates differently; however, the cashless festival wristband will not be compatible for purchases with any Boardwalk business. To make purchases within a Boardwalk business, we plan to use a form of payment other than your festival wristband.

CAN I RIDE MY BICYCLE ON THE BOARDWALK?

Yes! Bicycles are allowed on the Boardwalk at any time now. Taking a bike ride down the Boardwalk will be a great way to avoid the traffic congestion this weekend. Bicycle parking will be located between 1st and 2nd Street on the beach. *Per town ordinance, class 2 and 3 Electric bicycles are not allowed on the Boardwalk at any time.*

IS THERE A PLACE I PARK MY BICYCLE IF I WANT TO RIDE IT TO THE FESTIVAL?

Bicycle parking with bike racks will be available between 1st and 2nd Street on the beach. Don't forget to bring a bike lock with you to keep your bike safe. Bicycles will not be permitted inside the festival grounds.

ARE DOGS ALLOWED ON THE BOARDWALK?

While dogs are permitted on the Boardwalk and Beach from October 1 through April 30, pets are not allowed within the Festival grounds. However, miniature horses and dogs, which have been trained to provide assistance to an individual with a disability, are welcome. Please enter through the accessible lane at either entrance.

CAN I HAVE AN OPEN CONTAINER OF ALCOHOL ON THE BOARDWALK?

Open containers of alcohol and/or the consumption of alcohol outside of the festival grounds is prohibited by town ordinance. Alcohol is permitted within the festival grounds (some limitations apply). Please drink responsibly and have a plan to get home safely.

CAN WE HANG OUT ON THE BEACH AFTER THE FESTIVAL IS OVER?

Festivalgoers will have to leave the festival grounds upon closing, which includes businesses inside the festival footprint. If you're not ready to call it a night, we recommend taking a stroll on the Boardwalk and patronizing other business outside of the festival grounds. The beach closes at midnight to allow our beach sweepers to clean the beach to make it pristine for the next day. Sleeping on the beach is prohibited.



FESTIVAL GOERS FAQ

WHAT IS THE BAG POLICY AT COUNTRY CALLING?

- ALL bags will be searched before entry.
- Small clutch purses and fanny packs that are 6" x 9" or smaller do not need to be clear, but can have no more than one pocket.
- All other bags larger than 6" x 9" must be smaller than 12" x 6" x 12" and clear.
- Hydration packs are allowed and do not need to be clear, but must be emptied of all liquid and have no more than two pockets in addition to the one holding the water reservoir.

*SUBJECT TO CHANGE

WHAT'S ALLOWED INSIDE OF THE FESTIVAL?

Guests and their belongings are subject to search upon entry or re-entry. You can help keep the lines moving quickly by leaving large bags at home. For a complete list of allowed items, as well as prohibited items, please visit: <https://support.countrycallingfestival.com/hc/en-us/articles/24533701232148-What-items-are-allowed-prohibited-at-Country-Calling>

ARE THERE LOCKERS FOR RENT?

Yes! Reserve you locker in advance of the festival, click [HERE](#).

CAN I LEAVE AND RE-ENTER ON THE SAME DAY?

Festival patrons can leave and re-enter as often as they would like until 7pm. Patrons will scan their wristband and pass through security each time they re-enter the site.

CAN I USE MY FESTIVAL WRISTBAND TO MAKE PURCHASES AT THE BOARDWALK BUSINESSES IN THE FESTIVAL GROUNDS?

No. While some businesses may utilize cashless systems (for example apple pay or Square) each Boardwalk business operates differently. The cashless festival wristband will not be compatible for purchases with any Boardwalk business. To make purchases within a Boardwalk business, we plan to use a form of payment other than your festival wristband.

COUNTRY CALLING OFFICIAL BAG POLICY

APPROVED



ALL CLEAR BAGS MUST BE SMALLER THAN 12" X 6" X 12"

SMALL CLUTCH PURSES AND FANNY PACKS THAT ARE 6" X 9" OR SMALLER DO NOT NEED TO BE CLEAR, BUT CAN HAVE NO MORE THAN ONE POCKET.



HYDRATION PACKS ARE ALLOWED AND DO NOT NEED TO BE CLEAR BUT MUST BE EMPTIED OF ALL LIQUID, AND HAVE NO MORE THAN TWO POCKETS IN ADDITION TO THE ONE HOLDING THE RESERVOIR.

PROHIBITED



ANY BAG LARGER THAN 12" X 6" X 12"



BACKPACKS AND BAGS WITH MULTIPLE POCKETS

ALL BAGS WILL BE SEARCHED AT THE GATE. LEAVE YOUR BAG AT HOME FOR QUICKEST ENTRY!
MORE INFO AT [SUPPORT.COUNTRYCALLINGFESTIVAL.COM](https://support.countrycallingfestival.com)



RESOURCES

COUNTRY CALLING WEBSITE:

[HTTPS://WWW.COUNTRYCALLINGFESTIVAL.COM/](https://www.countrycallingfestival.com/)

FESTIVAL MAP:

[HTTPS://SUPPORT.COUNTRYCALLINGFESTIVAL.COM/HC/EN-US/ARTICLES/29746566576404-IS-THERE-A-FESTIVAL-MAP](https://support.countrycallingfestival.com/hc/en-us/articles/29746566576404-is-there-a-festival-map)

GETTING THERE MAP:

[HTTPS://SUPPORT.COUNTRYCALLINGFESTIVAL.COM/HC/EN-US/ARTICLES/24640732669204-HOW-DO-I-GET-TO-THE-FESTIVAL](https://support.countrycallingfestival.com/hc/en-us/articles/24640732669204-how-do-i-get-to-the-festival)

BEACH BUS EXPRESS SERVICE MODE MAP:

[HTTPS://SUPPORT.COUNTRYCALLINGFESTIVAL.COM/HC/ARTICLE_ATTACHMENTS/30049541519124](https://support.countrycallingfestival.com/hc/article_attachments/30049541519124)



SOCIAL MEDIA

FOLLOW US ON SOCIAL MEDIA FOR IMPORTANT UPDATES

OCEAN CITY POLICE DEPARTMENT

[HTTPS://WWW.FACEBOOK.COM/OCPDMDINFO/](https://www.facebook.com/ocpdmDinfo/)

TOWN OF OCEAN CITY

[HTTPS://WWW.FACEBOOK.COM/TOWNOFOCEANCITY](https://www.facebook.com/townofoceancity)

OCEAN CITY FIRE DEPARTMENT

[HTTPS://WWW.FACEBOOK.COM/OCMDFD](https://www.facebook.com/ocmDfd)

COUNTRY CALLING:

[HTTPS://WWW.FACEBOOK.COM/COUNTRYCALLINGFEST](https://www.facebook.com/countrycallingfest)

